

ANEXO E – Tabela de Evolução dos Sistemas de Cor



Fig. 01: Antiquidade - Aristóteles



Fig. 02: Antiquidade – Platão

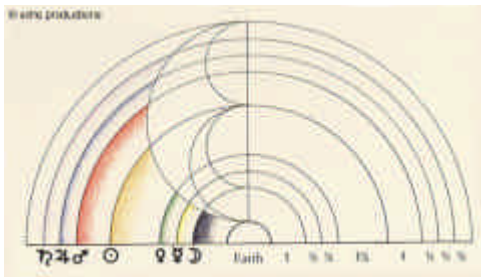


Fig.03: Antiquidade - Pitágoras

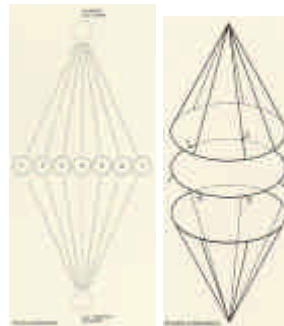


Fig.04: 1230 - Grosseteste



Fig. 05: - Da Vinci

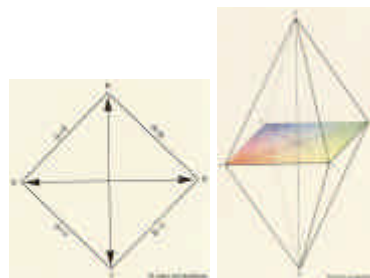


Fig.06: 1435 - Alberti

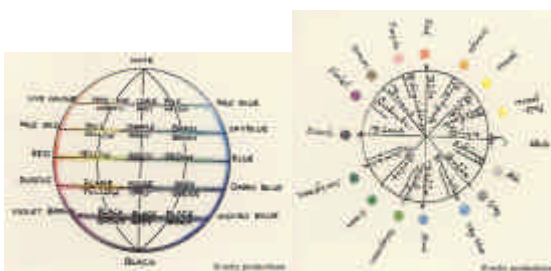


Fig.07: 1611 - Forsius

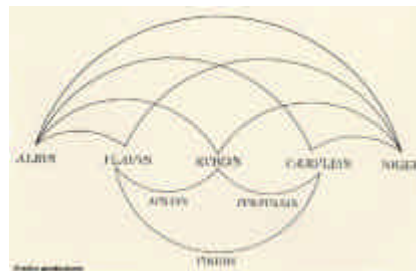


Fig.08: 1613 - Aguilonius

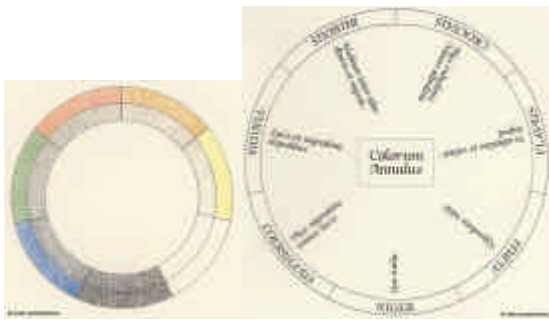


Fig.09: 1629 - Fludd

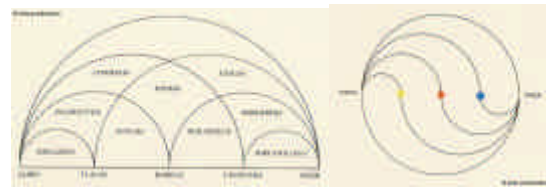


Fig.10: 1646 - Kirchner

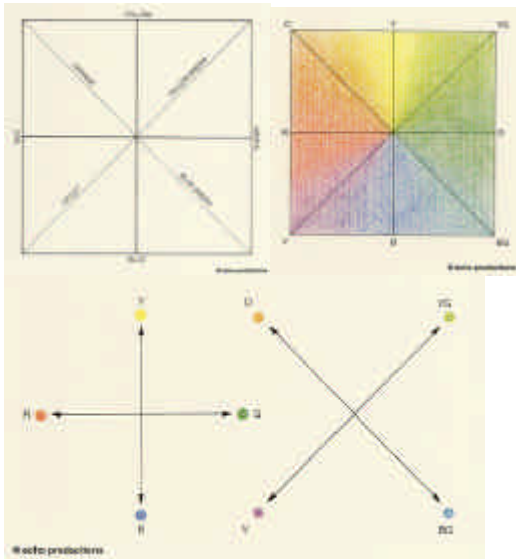


Fig. 11: 1686 - Waller

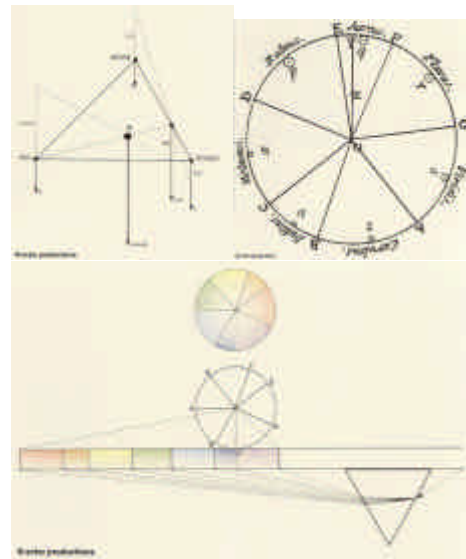


Fig.12: 1704 - Newton

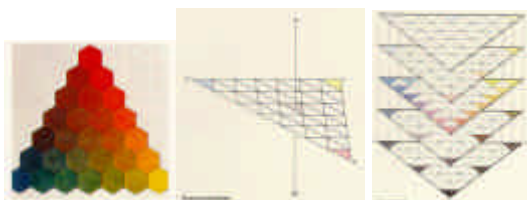


Fig. 13: 1745 - Mayer

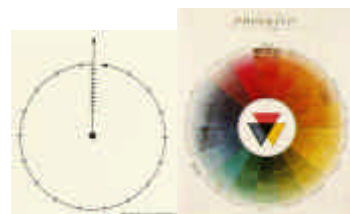


Fig.14: 1766 - Harris

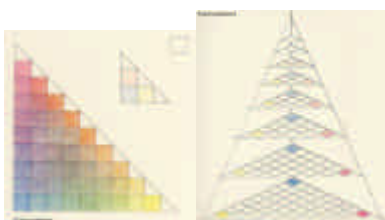


Fig.15: 1772 - Lambert



Fig.16: 1772 - Schiffermüller



Fig. 17: 1809 - Sowerby

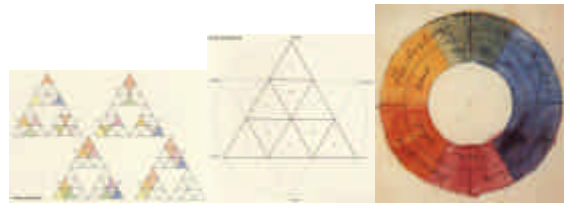


Fig. 18: 1810 - Goethe



Fig. 19: 1810 - Runge



Fig. 20: 1826 - Hayter

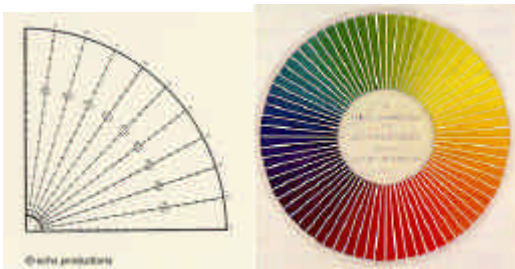


Fig. 21: 1839 - Chevreul



Fig. 22: 1846 - Field

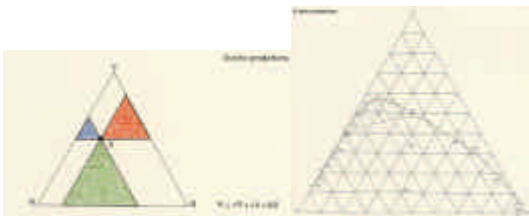


Fig. 23: 1855 - Maxwell

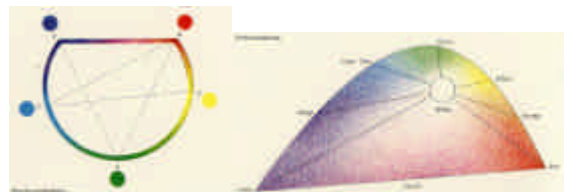


Fig. 24: 1860 - Helmholtz

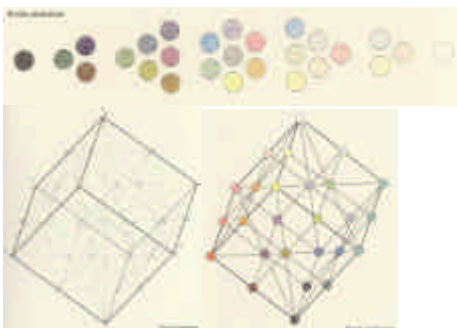


Fig. 25: 1868 - Benson

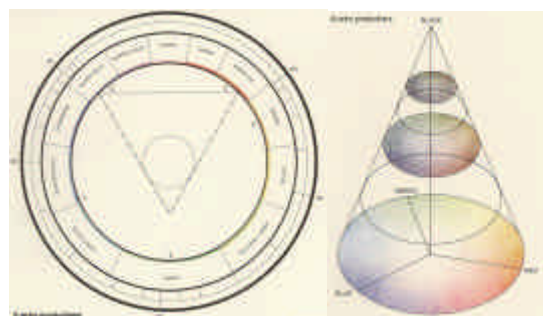


Fig. 26: 1874 - Bezold

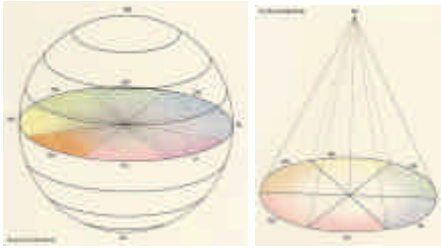


Fig. 27: 1874 e 1893 - Wundt

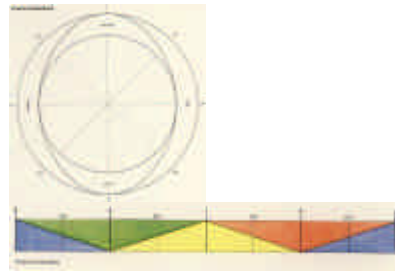


Fig. 28: 1978 - Hering

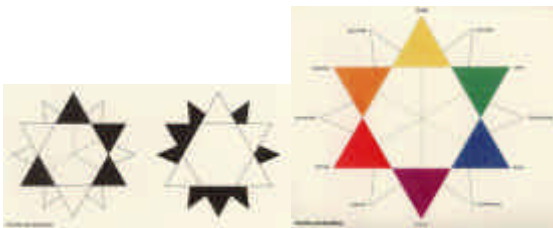


Fig. 29: 1879 - Blanc

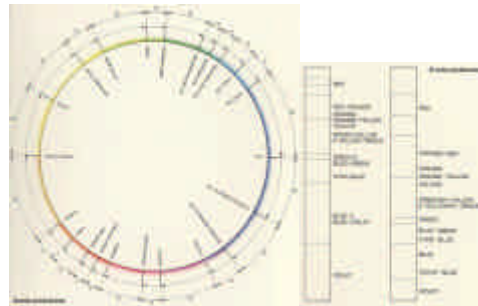


Fig. 30: 1879 - Rood



Fig. 31: 1890 - Lacouture

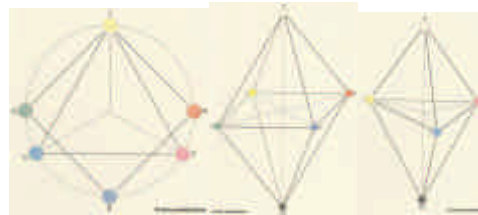


Fig. 32: 1897 - Hoefler

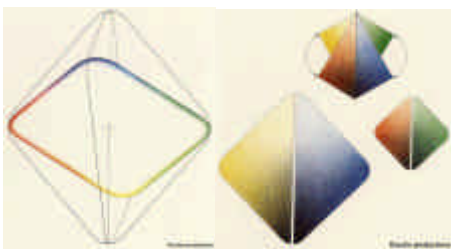


Fig. 33: 1902 - Ebbinghaus

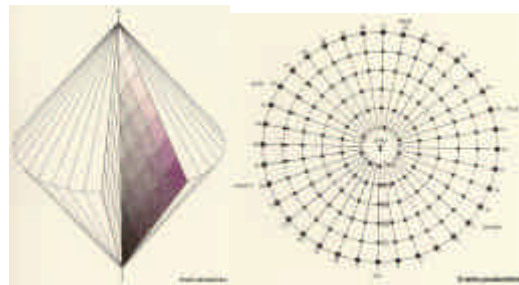


Fig. 34: 1912 - Ridgway



Fig. 35: 1915 - Munsell

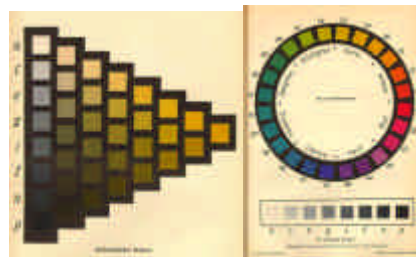


Fig. 36: 1917 - Ostwald

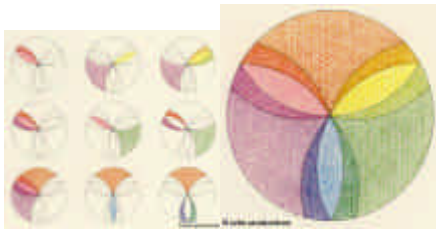


Fig. 37: 1923 - Jacobs

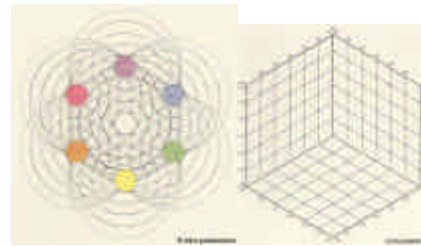


Fig. 38: 1924 - Becke

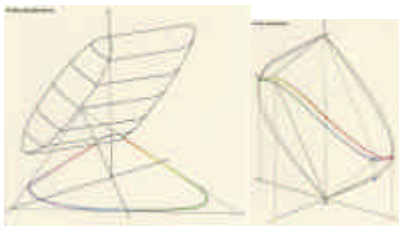


Fig. 39: 1927 - Luther - Nyberg

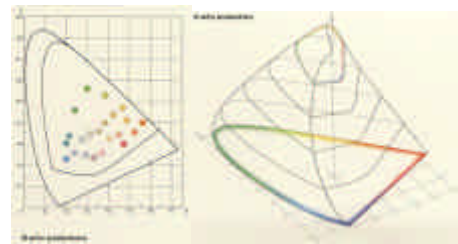


Fig. 40: 1928 - C.I.E. - S. Roesch

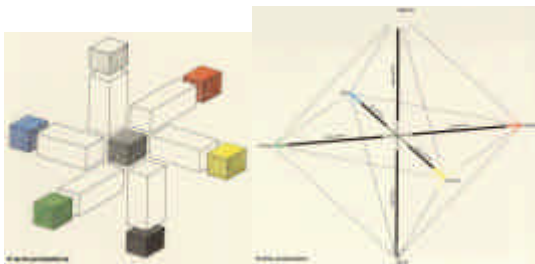


Fig. 41: 1929 - Boring

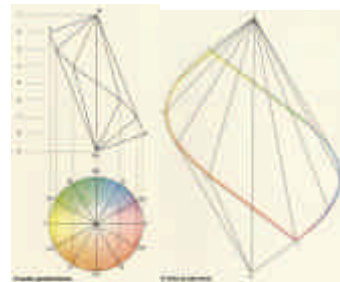


Fig. 42: 1929 - Pope

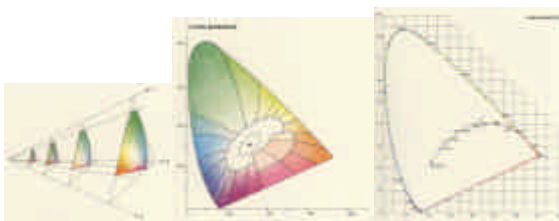


Fig. 43: 1931 - CIE

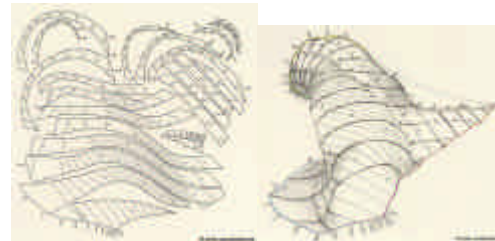


Fig. 44: 1944 - C.I.E. - Douglas L. MacAdam

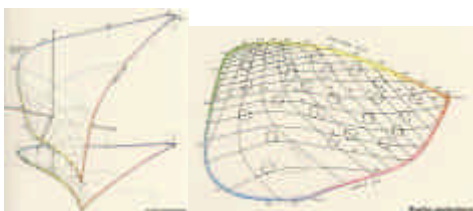


Fig. 45: 1946 - C.I.E. - Walter S. Stiles



Fig. 46: 1934 - Birren

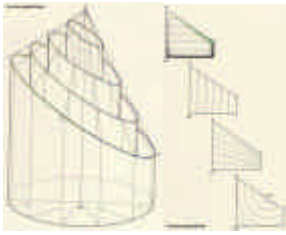


Fig. 47: 1939 - Johansson

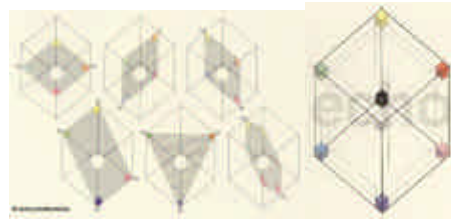


Fig. 48: 1951 - Mueller

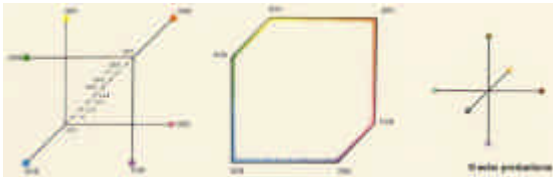


Fig. 49: 1952 - Hicethier

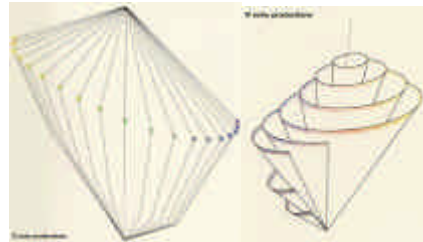


Fig. 50: 1953 - Hesselgren

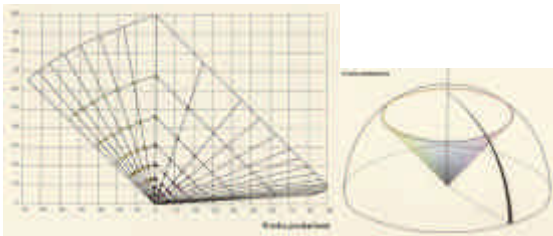


Fig. 51: 1953 - DIN

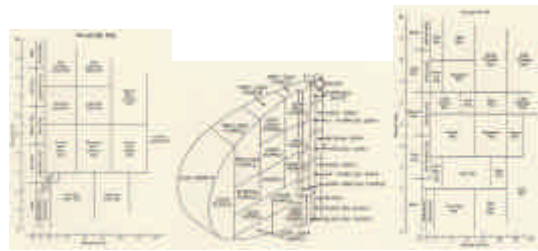


Fig. 52: 1955 - ISCC - NBS

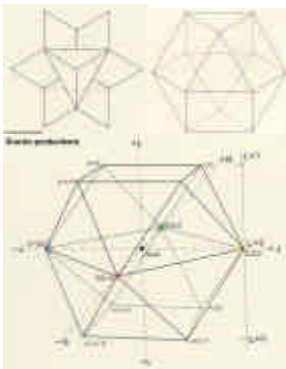


Fig. 53: 1960 - OSA

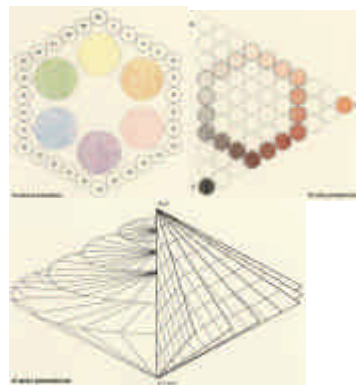


Fig. 54: 1965 - Mueller II

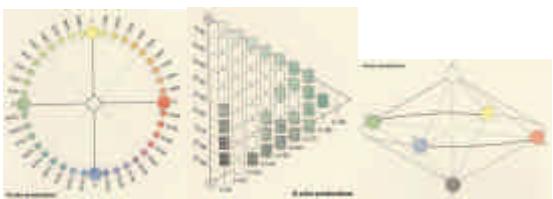


Fig. 55: 1968 - NCS

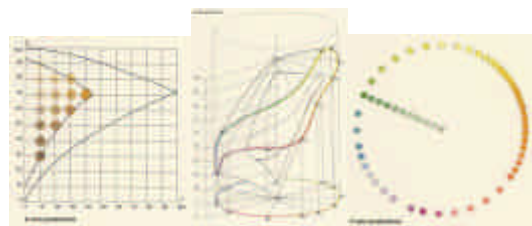


Fig. 56: 1974 - Coloroid

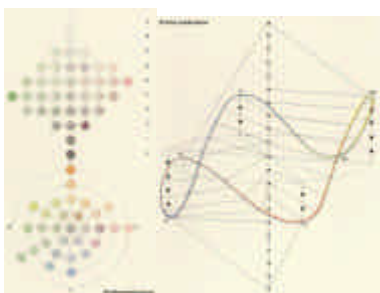


Fig. 57: 1975 - Gerritsen

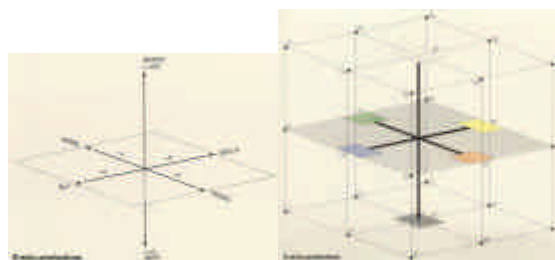


Fig.58: 1976 - CIE LAB

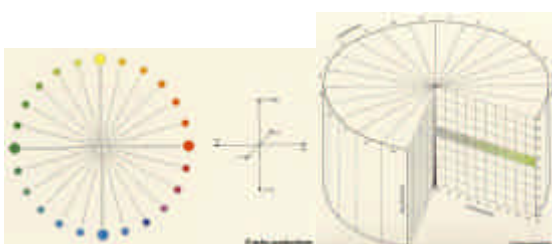


Fig. 59: 1978 - ACC

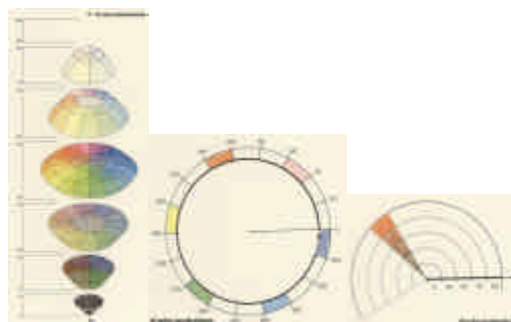


Fig.60: HSL

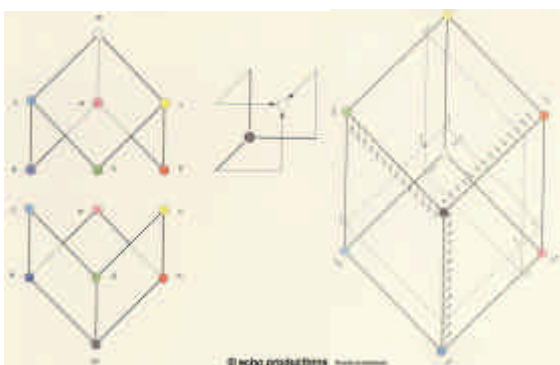


Fig.61: RGB

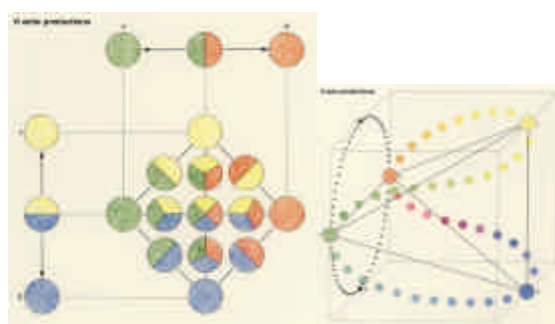


Fig.62: 1983 - Albert-Vanel

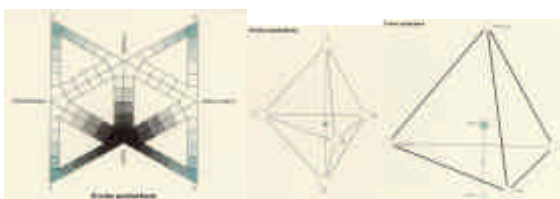


Fig.63: 1986 - CMN

Fonte: ECHO PRODUÇÕES. Colour order systems in art and science. 1999. Disponível em <<http://www.colorsystem.com/index.htm>>. Acesso em 20 dez 2005.